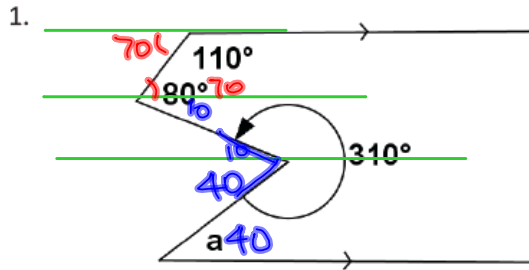
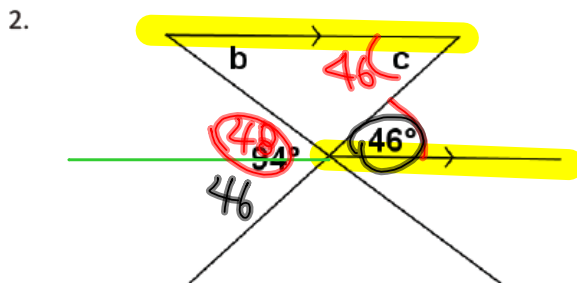


HW Review.

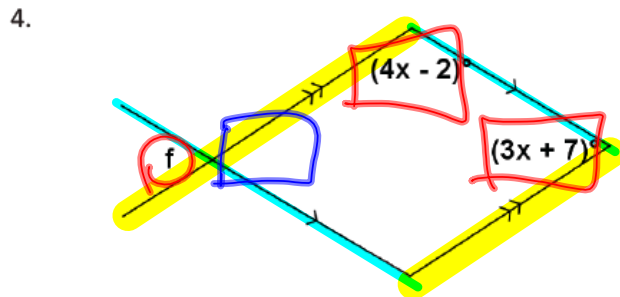


$$m\angle a = 40$$



$$m\angle b = 48$$

$$m\angle c = 46$$



$$m\angle f = 82$$

$$4x - 2 + 3x + 7 = 180$$

$$7x + 5 = 180$$

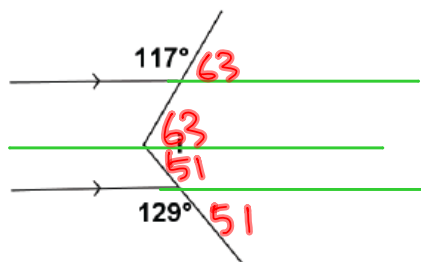
$$7x = 175$$

$$x = 25$$

$$m\angle f = 3(25) + 7$$

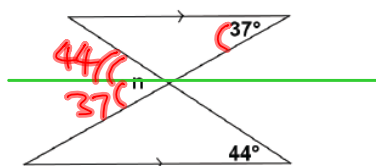
$$= 82$$

6.



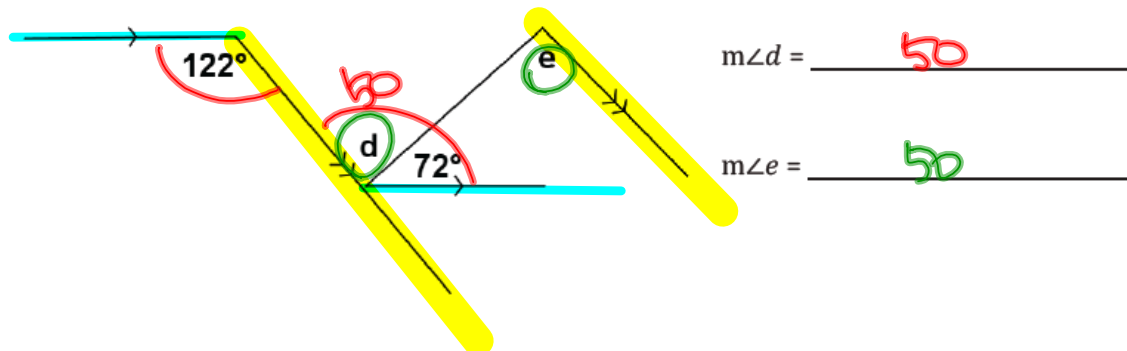
$$m\angle i = \underline{114}$$

8.

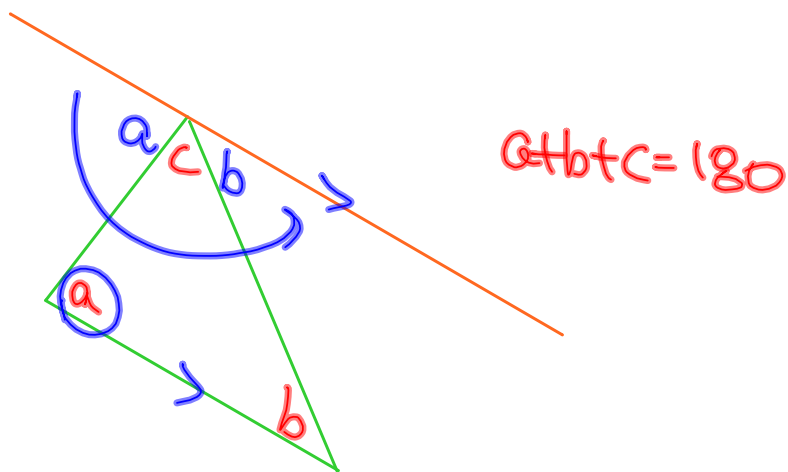


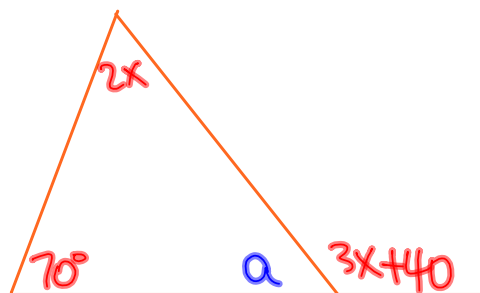
$$m\angle n = \underline{31}$$

3.



Sum of int. \angle 's in a \triangle .

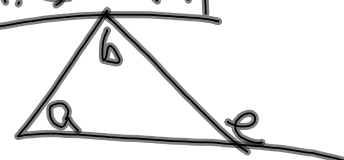


Find x .

$$2x + 70 = 3x + 40$$

$$30 = x$$

ext. \angle thm



$$e = a + b$$

$$a + (2x) + (70) = 180$$

$$a + (3x + 40) = 180$$

